

Standards:

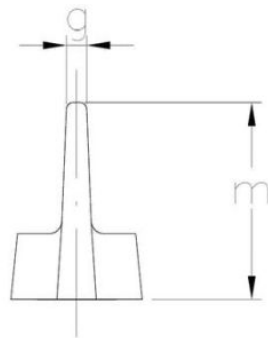
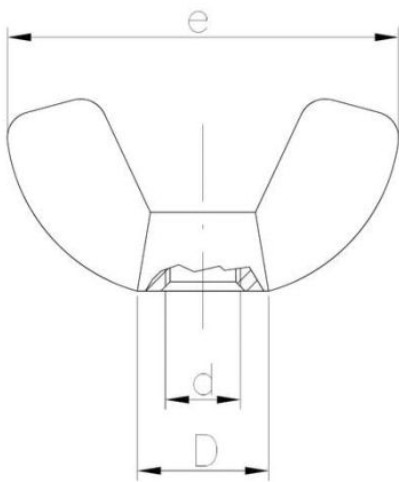
DIN 315~
GOST 3032-76
PN-M 82439



Beschichtung (Standard):



Beschichtung (Sonderausführung):



Maße

| Material index | d | D [mm] | e [mm] | m [mm] | g [mm] | Art der Beschichtung |
|----------------|-----|--------|--------|--------|--------|----------------------|
| 1510160BD315T | M16 | 29.0 | 73.0 | 37.5 | 6.4 | B (Weiss verzinkt) |
| 1510120BD315T | M12 | 24.0 | 50.0 | 26.0 | 5.2 | B (Weiss verzinkt) |
| 1510100BD315T | M10 | 18.0 | 37.0 | 20.0 | 4.3 | B (Weiss verzinkt) |
| 1510080D315AT | M8 | 14.0 | 31.5 | 16.0 | 3.8 | A (Gelb verzinkt) |
| 1510080BD315T | M8 | 14.0 | 31.5 | 16.0 | 3.8 | B (Weiss verzinkt) |
| 1510060BD315T | M6 | 12.0 | 26.0 | 14.0 | 3.4 | B (Weiss verzinkt) |
| 1510060AD315T | M6 | 12.0 | 26.0 | 14.0 | 3.4 | A (Gelb verzinkt) |
| 1510050BD315T | M5 | 11.0 | 21.0 | 11.5 | 3.0 | B (Weiss verzinkt) |
| 1510040BD315T | M4 | 10.0 | 21.0 | 11.5 | 3.0 | B (Weiss verzinkt) |
| 1510030BD315T | M3 | 9.0 | 20.0 | 10.0 | 2.5 | B (Weiss verzinkt) |