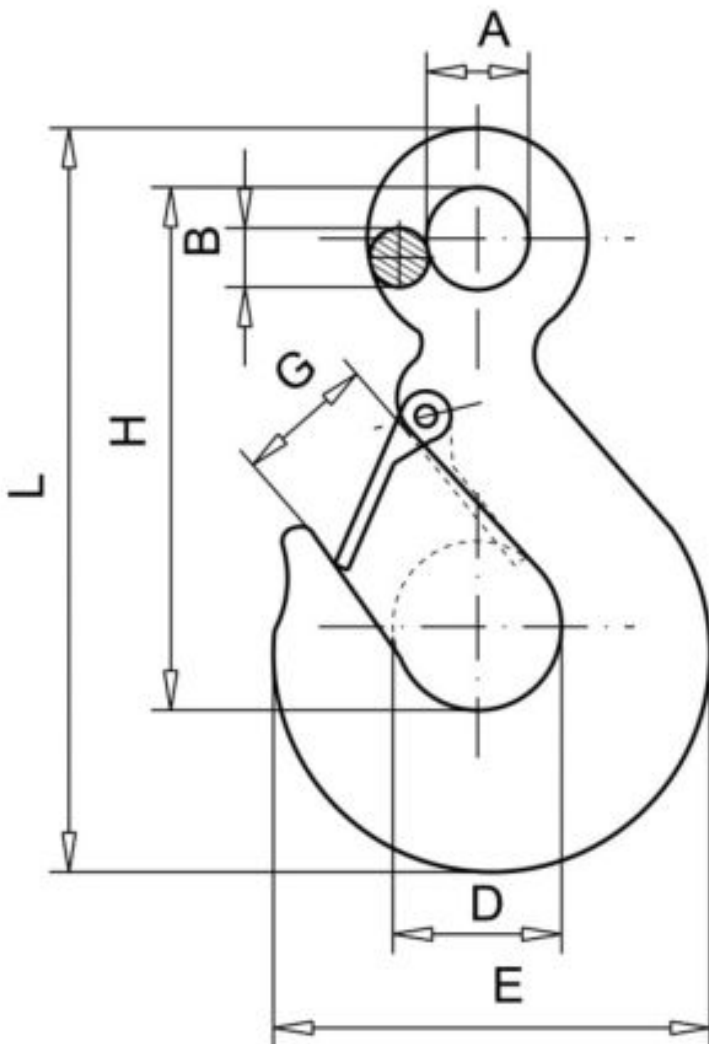


Standards:

DIN 689-, DIN 7540-
-ISO 1677-2



Maße

Material index	Obciążenie znamionowe [kg]	A [mm]	B [mm]	D [mm]	E [mm]	G [mm]	H [mm]	L [mm]	Farbe
63261000OCS	1000	20	13.5	40	98	25	114	162	Grau
63261000MALS	1000	20	13.5	40	98	25	114	162	Rot
63261500MALS	1500	27	13	35	93	23	103	142	Rot
63260500OCS	500	16	10	30.5	72	22	83.5	118	Grau
63260250OCS	250	13	7.5	23	54	15	64	89	Grau
63263000MALS	3000	39	19	46	125	26.5	145	204	Rot
63261600OCS	1600	26	17	47	116.5	31	136	190	Grau
63262000MALS	2000	31				28	119	162.5	Rot
63265000MALS	5000	51				42	187	256	Rot
63260750MALS	750	19				22	81.5	110	Rot