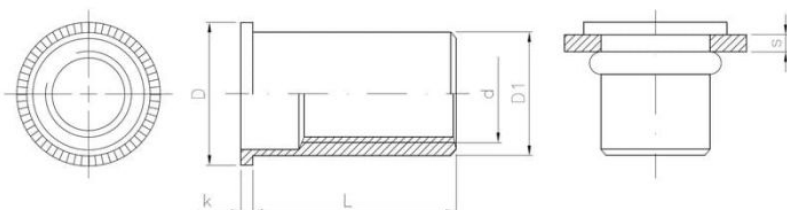


Beschichtung (Standard):



Maße

Material index	d	L [mm]	D [mm]	k [mm]	D1 [mm]	s [mm]
2501040100STT	M4	10.0	8.5	0.8	5.9	0.5-2.0
2501120200STT	M12	20.0	18.0	1.7	14.9	1.0-4.0
2501120230STT	M12	23.0	18.0	1.7	14.9	4.0-6.5
2501100195STT	M10	19.5	17.0	1.6	12.9	2.5-4.0
2501100225STT	M10	22.5	17.0	1.6	12.9	4.0-6.0
2501100155STT	M10	15.5	16.3	1.6	12.9	0.5-2.5
2501100175STT	M10	17.5	16.0	1.6	12.9	1.0-3.5
2501080195STT	M8	19.5	15.0	1.5	10.9	3.5-6.0
2501080160STT	M8	16.0	15.0	1.5	10.9	0.5-3.5
2501060165STT	M6	16.5	12.3	1.3	8.9	3.0-5.5
2501060140STT	M6	14.0	12.3	1.3	8.9	0.5-3.0
2501050160STT	M5	16.0	10.0	1.0	6.9	2.5-5.0
2501050120STT	M5	12.0	10.0	1.0	6.9	0.5-2.5