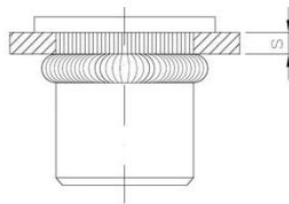
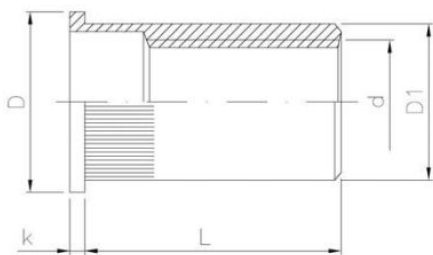


Beschichtung (Standard):



Maße

| Material index | d | L [mm] | D [mm] | k [mm] | D1 [mm] | s [mm] |
|----------------|-----|--------|--------|--------|---------|---------|
| 2502040110STT | M4 | 11.0 | 9.0 | 0.8 | 5.9 | 2.0-3.5 |
| 2502040100STT | M4 | 10.0 | 9.0 | 0.8 | 5.9 | 0.5-2.0 |
| 2502100220STT | M10 | 22.0 | 17.0 | 1.7 | 12.9 | 4.0-6.0 |
| 2502100200STT | M10 | 20.0 | 17.0 | 1.7 | 12.9 | 1.0-4.0 |
| 2502080195STT | M8 | 19.5 | 14.6 | 1.5 | 10.9 | 3.5-6.0 |
| 2502080170STT | M8 | 17.0 | 14.5 | 1.5 | 10.9 | 1.0-3.5 |
| 2502060185STT | M6 | 18.5 | 12.3 | 1.3 | 8.9 | 3.0-5.5 |
| 2502060140STT | M6 | 14.0 | 12.3 | 1.3 | 8.9 | 0.5-3.0 |
| 2502050120STT | M5 | 12.0 | 10.0 | 1.0 | 6.9 | 0.5-2.5 |
| 2502050155STT | M5 | 15.5 | 10.0 | 1.0 | 6.9 | 2.5-5.0 |