

Standards:

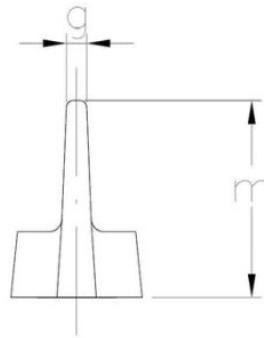
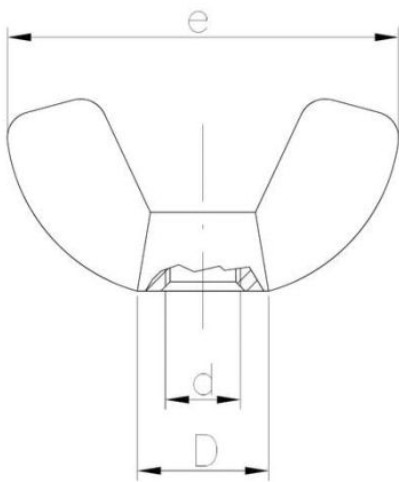
DIN 315~
GOST 3032-76
PN-M 82439



Beschichtung (Standard):



Beschichtung (Sonderausführung):



Maße

Material index	d	D [mm]	e [mm]	m [mm]	g [mm]	Art der Beschichtung
1510030BD315T	M3	9.0	20.0	10.0	2.5	B (Weiss verzinkt)
1510040BD315T	M4	10.0	21.0	11.5	3.0	B (Weiss verzinkt)
1510050BD315T	M5	11.0	21.0	11.5	3.0	B (Weiss verzinkt)
1510060AD315T	M6	12.0	26.0	14.0	3.4	A (Gelb verzinkt)
1510060BD315T	M6	12.0	26.0	14.0	3.4	B (Weiss verzinkt)
1510080BD315T	M8	14.0	31.5	16.0	3.8	B (Weiss verzinkt)
1510080D315AT	M8	14.0	31.5	16.0	3.8	A (Gelb verzinkt)
1510100BD315T	M10	18.0	37.0	20.0	4.3	B (Weiss verzinkt)
1510120BD315T	M12	24.0	50.0	26.0	5.2	B (Weiss verzinkt)
1510160BD315T	M16	29.0	73.0	37.5	6.4	B (Weiss verzinkt)