

Materiale:

ANFRAGE

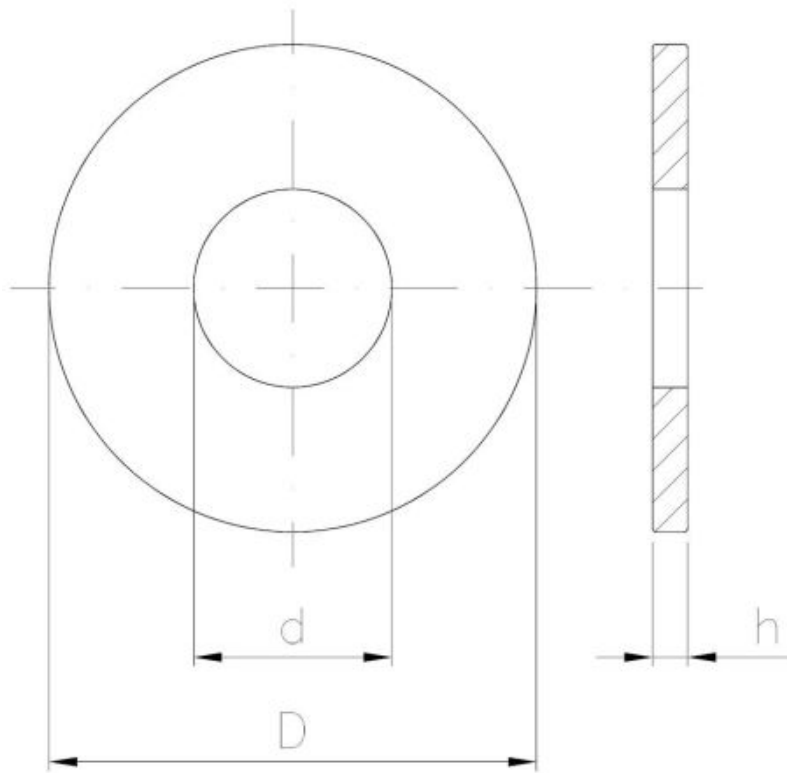
+48 58 55 40 410

Standards:

DIN 9021
ISO 7093
PN-M 82030

A2

A4



Maße

Material index	d [mm]	D [mm]	h [mm]	Materialien
I1403030A2D9021T	3.2	9.0	0.8	A2 (Edelstahl)
I1403040A2D9021T	4.3	12.0	1.2	A2 (Edelstahl)
I1403050A2D9021T	5.3	15.0	1.2	A2 (Edelstahl)
I1403050A4D9021T	5.3	15.0	1.2	A4 (säurebeständiger Stahl)
I1403060A2D9021T	6.4	18.0	1.6	A2 (Edelstahl)
I1403060A4D9021T	6.4	18.0	1.6	A4 (säurebeständiger Stahl)
I1403080A2D9021T	8.4	24.0	2.0	A2 (Edelstahl)
I1403080A4D9021T	8.4	24.0	2.0	A4 (säurebeständiger Stahl)
I1403100A2D9021T	10.5	28.5	1.5	A2 (Edelstahl)
I1403100A4D9021T	10.5	28.5	1.5	A4 (säurebeständiger Stahl)

Material index	d [mm]	D [mm]	h [mm]	Materialien
I1403120A2D9021T	13.0	37.0	3.0	A2 (Edelstahl)
I1403140A2D9021S	14.2	44.0	3.0	A2 (Edelstahl)
I1403160A2D9021T	17.0	50.0	3.0	A2 (Edelstahl)
I1403200A2D9021S	22.0	60.0	3.0	A2 (Edelstahl)